

YF-T12 SERIES (PC Board Mounting Filters)



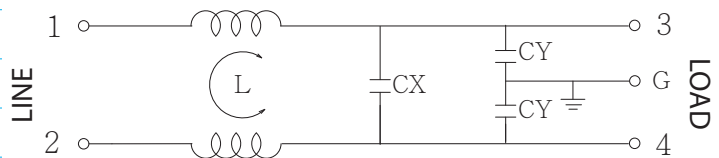
Features

- Direct PC Board mounting for easy installation and compact for space saving, the reliable plastic cover at low cost.
- The rated current can be offered from 0.5 to 10 amps.
- Low leakage current version upon requested.
- All parts are approved by UL, CE
- Applications comprising Household equipment , Medical equipment, Test and measurement equipment, datacom equipment, automation equipment
- Custom-specific versions are available on request.

Technical Specification

Rated voltage	125/250VAC
Rated currents	Up to 10A
Operating frequency	50/60Hz
Hipot rating(Line-to-line)	1450VDC
Hipot rating(Line-to-ground)	2250VDC
Operating temperature	-25~+85°C
Safety compliance	UL, CE

Typical electrical schematic

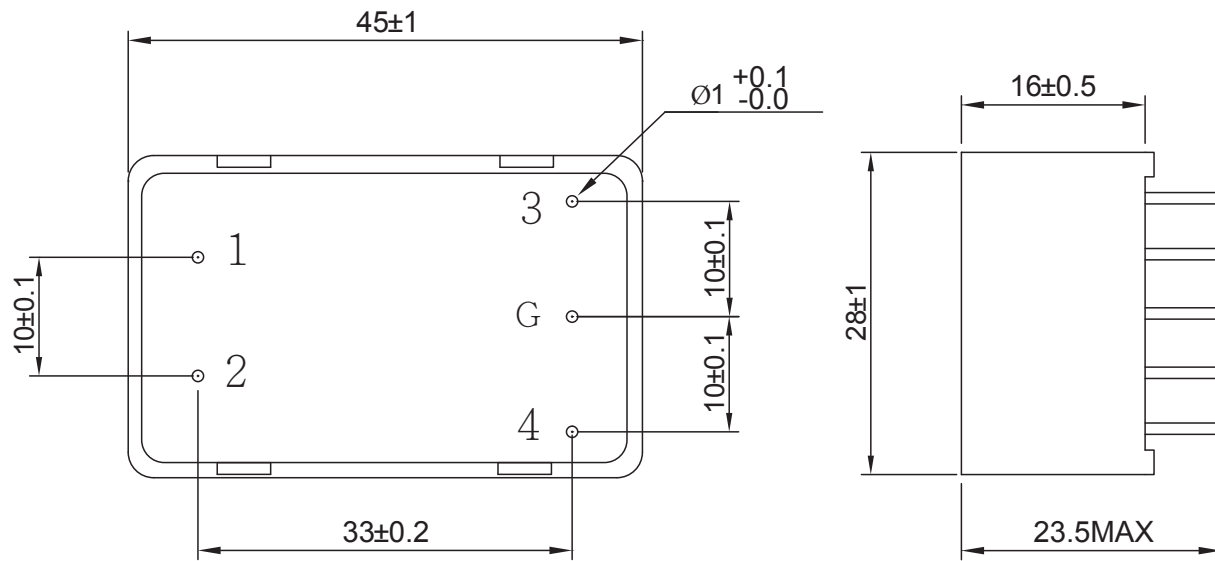


Filter Selection Table

Part No.	Rated Current (A)	Inductance L(mH)	Capacitance CX(μF)	Capacitance CY(pF)	Output connections
YF0R5T12	0.5	40	0.1	2500	PCB terminal
YF1R5T12	1.5	6	0.1	2500	
YF2R5T12	2.5	2	0.1	2500	
YF6R5T12	6.5	1	0.1	2500	
YF10T12	10	0.3	0.1	2500	

Physical Dimensions: (mm)

YF-T12



Typical filter attenuation (Common mode — Normal mode —)

