

YE SERIES (Single Phase One-Stage Filters)



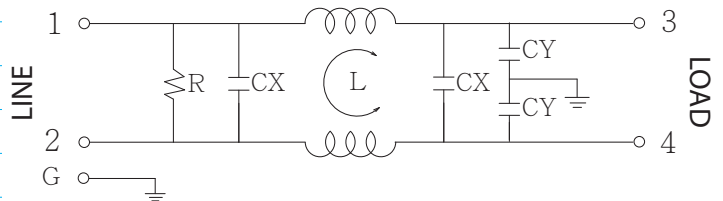
Features

- The YE series is a special designed single phase one-stage filter with both common mode and normal mode performing high noise suppression.
- The rated current can be offered from 5 to 30 amps.
- Various output selections such as fast-on terminal, M4 screw terminals and lead wire.
- Low leakage current version upon requested.
- Approved by UL ,CSA ,VDE and CE
- Application for Electrical and electronic equipment, Household equipment, Automation equipment, Fitness machine
- Custom-specific versions are available on request.

Technical Specification

| | |
|------------------------------|-------------------------------------|
| Rated voltage | 125/250VAC |
| Rated currents | Up to 30A |
| Operating frequency | 50/60Hz |
| Hipot rating(Line-to-line) | 1450VDC |
| Hipot rating(Line-to-ground) | 2250VDC |
| Operating temperature | -25~+85°C |
| Safety compliance | 5A (UL,CSA) ; 5 to 30A (VDE, CE) |

Typical electrical schematic

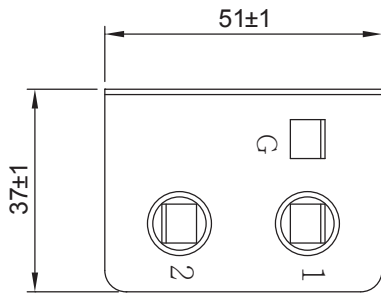
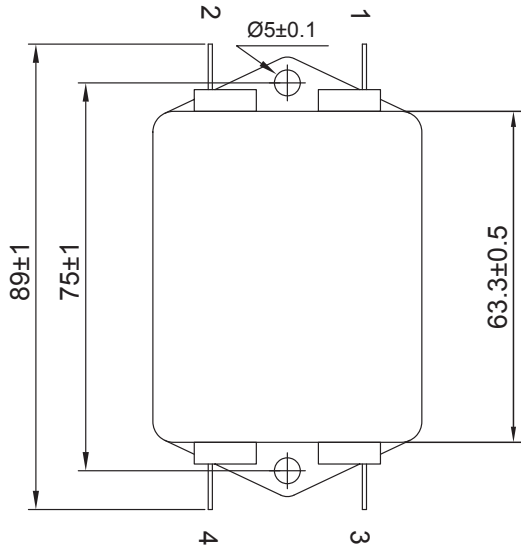


Filter Selection Table

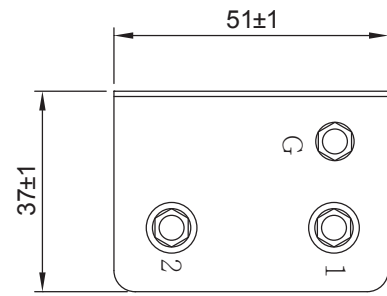
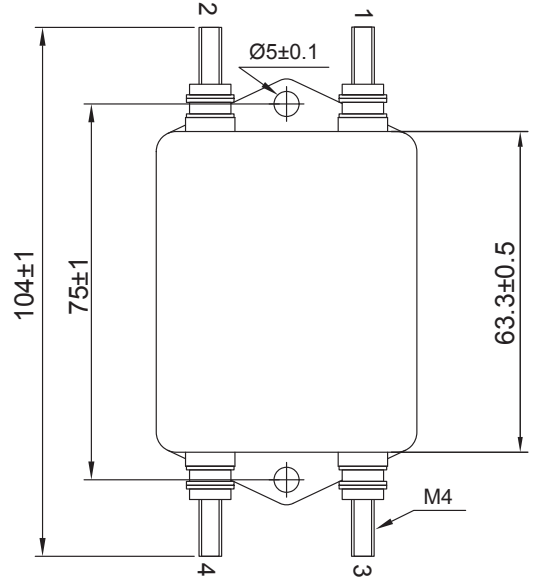
| Part NO. | Rated Current (A) | Inductance L(mH) | Capacitance CX(μ F) | Capacitance CY(pF) | Resistance R(ohm) | Output connections |
|----------|-------------------|------------------|--------------------------|--------------------|-------------------|--|
| YE05T1 | 5 | 5 | 0.1 | 3300 | 10M | Fast-on terminal (optional lead-wire) |
| YE10T1 | 10 | 3 | 0.1 | 3300 | 10M | |
| YE15T1 | 15 | 2 | 0.1 | 3300 | 10M | |
| YE20T1 | 20 | 0.9 | 0.1 | 3300 | 10M | |
| YE30T1 | 30 | 0.5 | 0.1 | 3300 | 10M | |
| YE05T4 | 5 | 5 | 0.1 | 3300 | 10M | M4 Screw terminals |
| YE10T4 | 10 | 3 | 0.1 | 3300 | 10M | |
| YE15T4 | 15 | 2 | 0.1 | 3300 | 10M | |
| YE20T4 | 20 | 0.9 | 0.1 | 3300 | 10M | |
| YE30T4 | 30 | 0.5 | 0.1 | 3300 | 10M | |

Physical Dimensions: (mm)

YE-T1

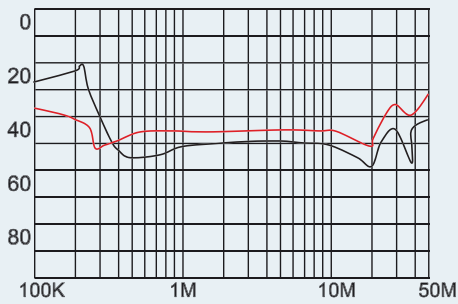


YE-T4

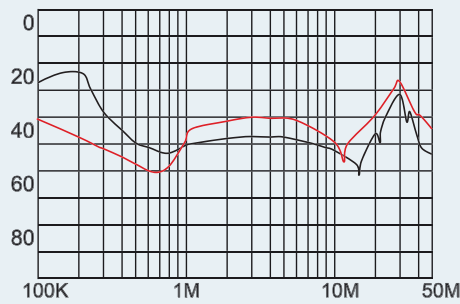


Typical filter attenuation (Common mode — Normal mode —)

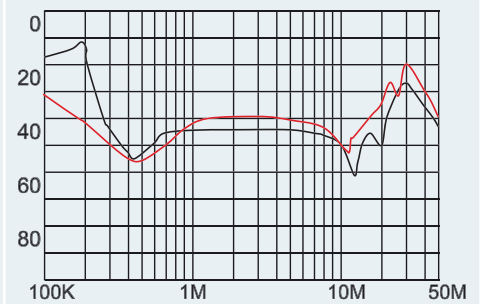
YE05



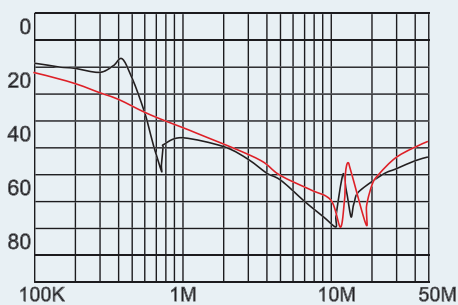
YE10



YE15



YE20



YE30

